

ADDENDUM NO. 1

DATE: July 1, 2020

PROJECT:

MERCED COLLEGE HEALTH CENTER PROJECT
MCCD BID NO. 2020-03

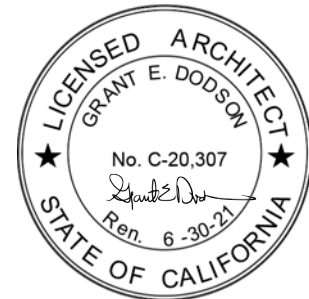
OWNER:

MERCED COMMUNITY COLLEGE DISTRICT
3600 M Street
Merced, CA 95348

ARCHITECT:

DARDEN ARCHITECTS, INC.
Attention: Grant E. Dodson
6790 N. West Avenue
Fresno, California 93711
T. (559) 448-8051
F. (559) 446-1765

DARDEN PROJECT NO. 1954
DSA File Nos. 24-C1
DSA APPL. NO. 02-118108



It will be the responsibility of the General Contractor to submit the information contained in this addendum to all its subcontractors and suppliers. Acknowledge receipt of this Addendum in the space provided on the Bid Form. Failure to do so may subject Bidder to disqualification.

The following additions, deletions, and revisions to the SHEETS and Project Manual are hereby made and do become a part of these Contract Documents.

PROJECT: MERCED COLLEGE HEALTH CENTER PROJECT

ADDENDUM NO. 1DATE: July 1, 2020
PAGE 2

INDEX OF ADDENDA TRANSMITTED HEREWITH

PROJECT MANUAL:

BIDDING AND CONTRACT REQUIREMENTS:

CHANGES TO BIDDING REQUIREMENTSAD1-CBR01

BID QUESTIONS..... AD1-BQ01 THRU AD1-BQ02

SPECIFICATIONS:

CHANGES TO SPECIFICATIONSAD1-SP01 THRU AD1-SP03

SHEETS:

CHANGES TO SHEETS:

ARCHITECTURAL.....AD1-A01 THRU AD1-A03

ATTACHMENTS:

DOCUMENTS OR SPECIFICATIONS:

102813 TOILET ACCESSORIES.....Pages 1 thru 3

SHEETS:

ARCHITECTURALAD1-AX01, AD1-AX02.

PROJECT: MERCED COLLEGE HEALTH CENTER PROJECT

ADDENDUM NO. 1DATE: July 1, 2020
PAGE 3

PROJECT MANUAL:

BIDDING AND CONTRACT REQUIREMENTS:

CHANGES TO BIDDING REQUIREMENTS:

AD1-CBR01 Refer to Specification Section 001113, Notice Calling for Bids:

1. Refer to the chart on page three (3), line item "LATEST TIME/DATE FOR SUBMISSION OF BID PROPOSAL"
2. Revise "LATEST TIME/DATE FOR SUBMISSION OF BID PROPOSALS 10:00 A.M. Thursday, July 09, 2020", to read as follows "LATEST TIME/DATE FOR SUBMISSION OF BID PROPOSALS 10:00 A.M. Wednesday, July 29, 2020"

BID QUESTIONS:

AD1-BQ01 Bid Question #1

1. QUESTION: Are we required to use the college vendors for roof patches?
2. ANSWER: There is no language in the documents requiring pre-qualification or the use of college vendors for sub-contractors. The sub-contractors need to have a DIR number, contractor's license, and insurance.

AD1-BQ02 Bid Question #2

1. QUESTION: Are there landscape plans available?
2. ANSWER: No specific landscape plans are included in the documents. General scope for modification and restoration of landscape and irrigation systems is given on SD/A102.

SPECIFICATIONS:

CHANGES TO SPECIFICATIONS:

AD1-SP01 Refer to Specification Section 081416, WOOD DOORS:

1. Refer Article 2.2, c. Face Veneers:
2. Add the following bullet point
"3) Wood species to be AWS White Maple"

AD1-SP02 Refer to Specification Section 102813, TOILET ACCESSORIES:

1. Remove and replace spec section 102813, TOILET ACCESSORIES with the attached 102813, TOILET ACCESSORIES – AD1-SX01.

AD1-SP03 Refer to Specification Section 260500, COMMON WORK RESULTS FOR ELECTRICAL:

1. Refer Article 1.02, A., 4.
2. Strike out "VoIP, Security Access" from bullet point 4 so that it reads, "Data, and Fire alarm system, conductors, cabling, outlets, and equipment, for complete working systems"

PROJECT: MERCED COLLEGE HEALTH CENTER PROJECT

ADDENDUM NO. 1**DATE: July 1, 2020**
PAGE 4

SHEETS:

CHANGES TO SHEETS:

ARCHITECTURAL:

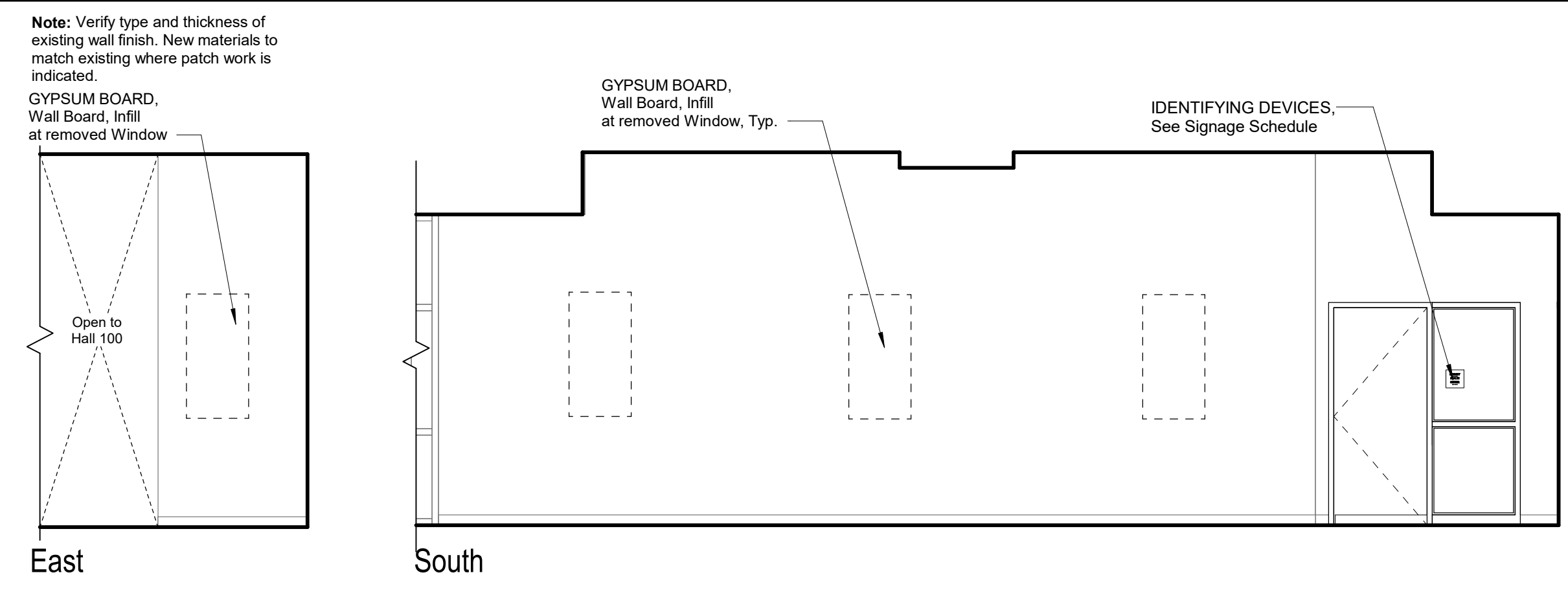
- AD1-A01 Refer to Sheet A/A101, DEMOLITION FLOOR PLAN & FLOOR PLAN:**
1. Refer to the drawing legend at N1, Demolition Floor Plan Legend.
 2. Strike out demolition note 04. The district will perform the removal of the Existing Windows and Frames.
 3. Refer to drawing A1, Demolition Floor Plan.
 4. Strike out Demolition Note 04 on Demo floor plan.

- AD1-A02 Refer to Sheet A/A301, DEMOLITION ROOF PLAN & ROOF PLAN:**
1. Refer to the drawing at N14.
 2. Remove and replace the "*ROOF ACCESORIES, Manufactured Curbs, Equipment Platform*" drawing with the attached AD1-AX02.

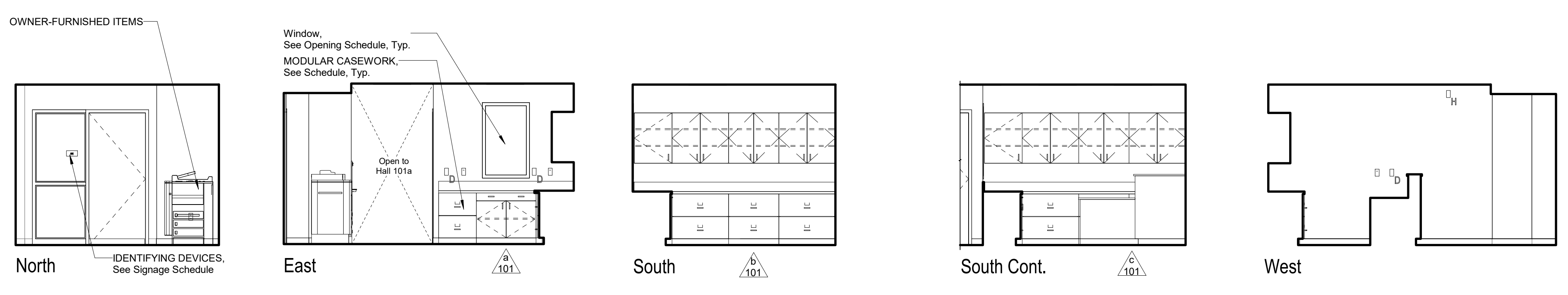
- AD1-A03 Refer to Sheet A/A601, INTERIOR ELEVATIONS:**
1. Remove and replace sheet A/A601, INTERIOR ELEVATIONS with the attached AD1-AX01.

END OF ADDENDUM NO. 1

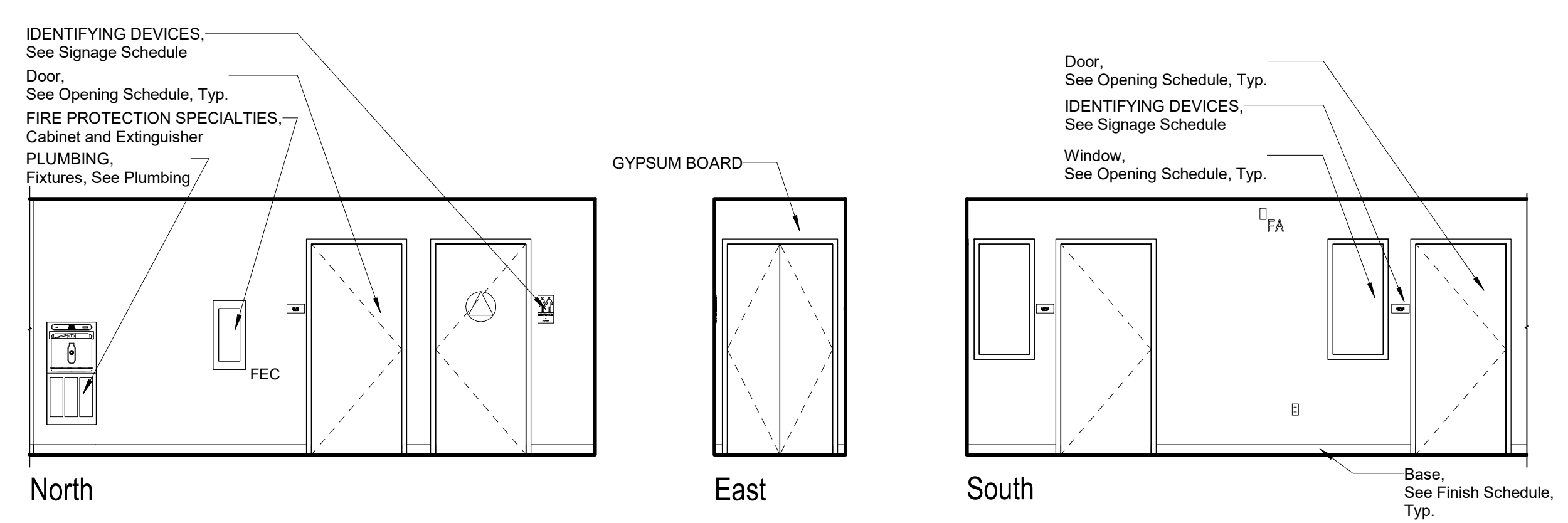
R
Q
P
N
M
L
K
J
H
G
F
E
D
C
B
A



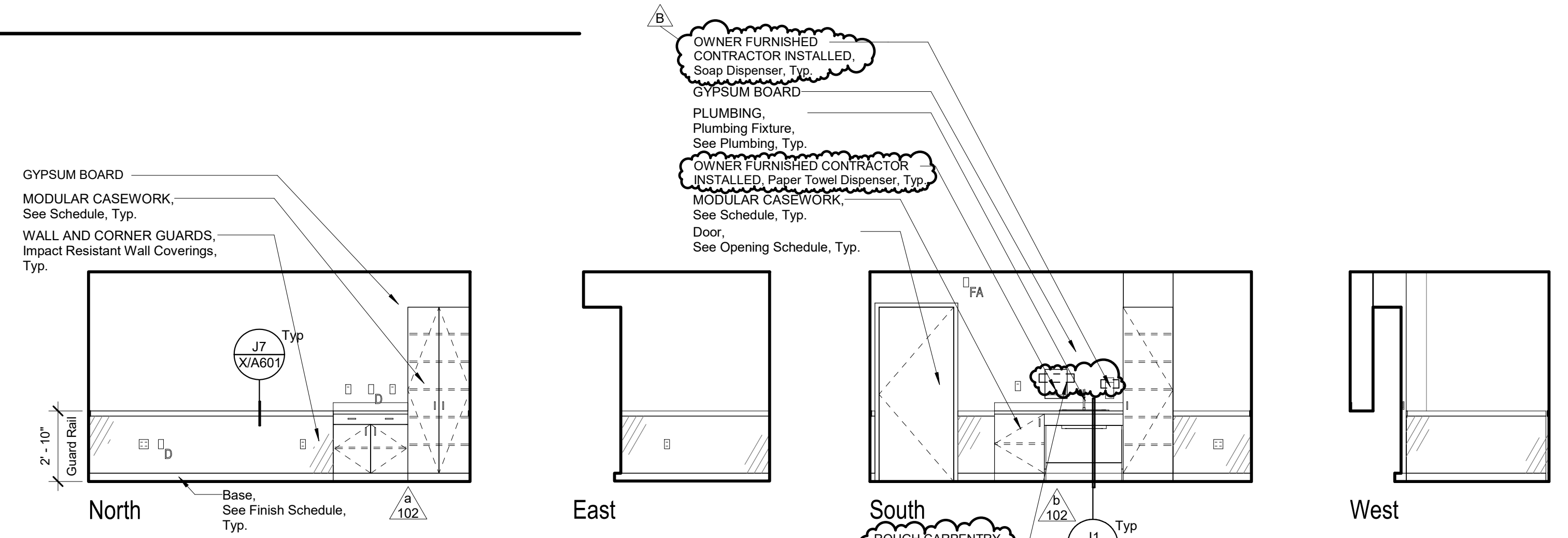
100 Hall



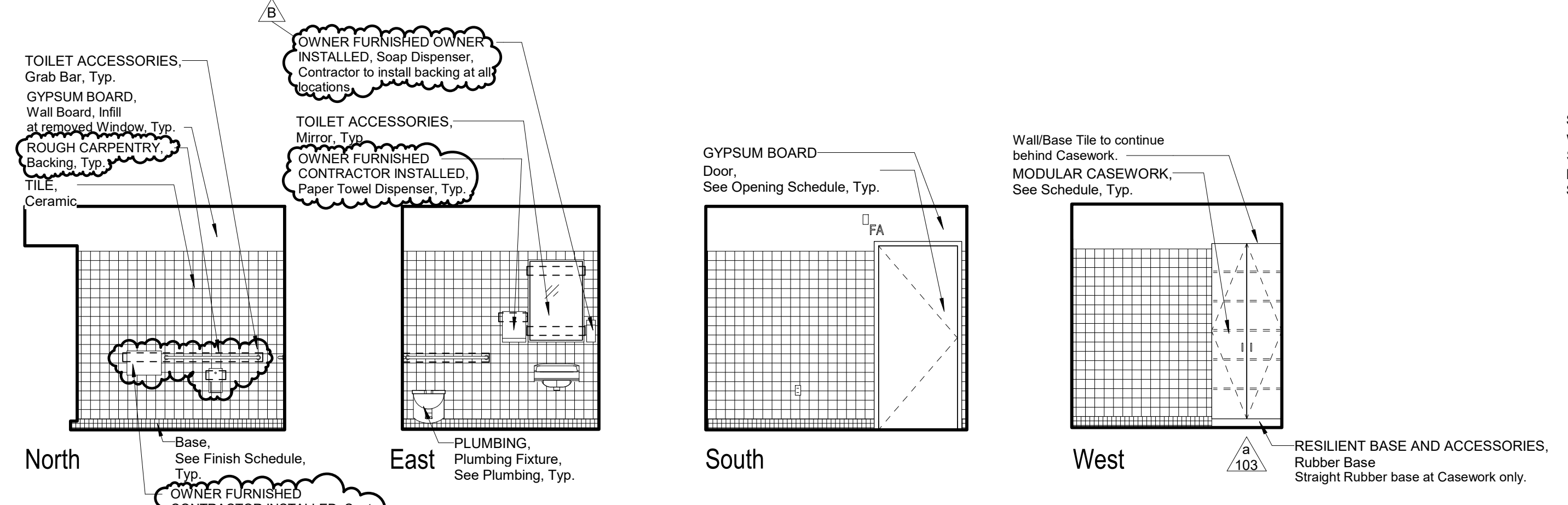
101a Reception



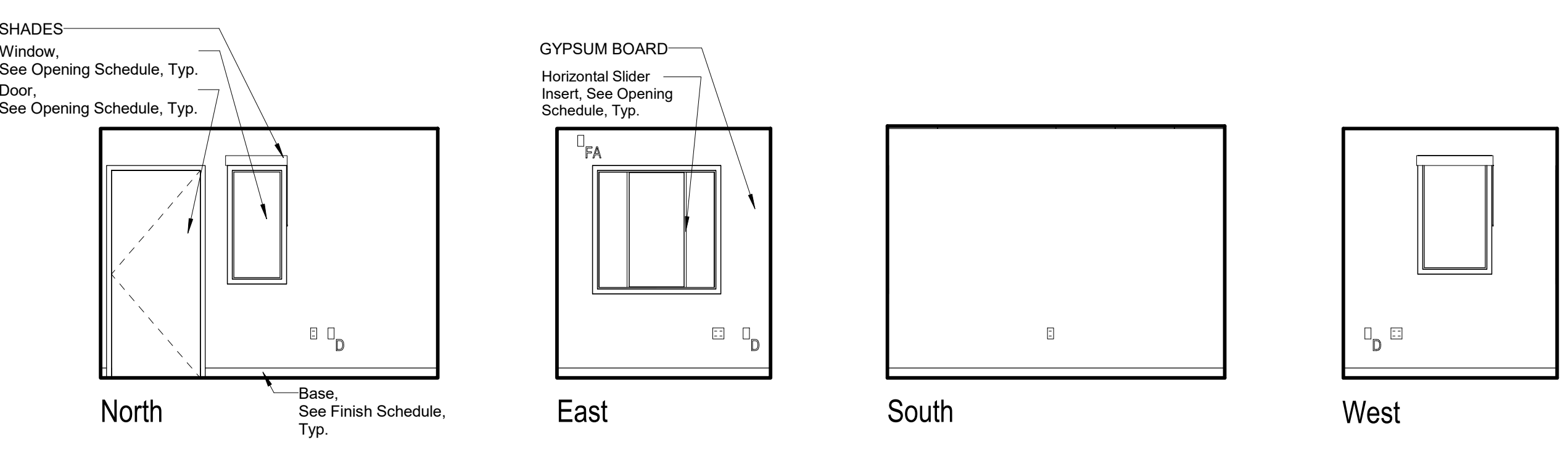
101b Hall



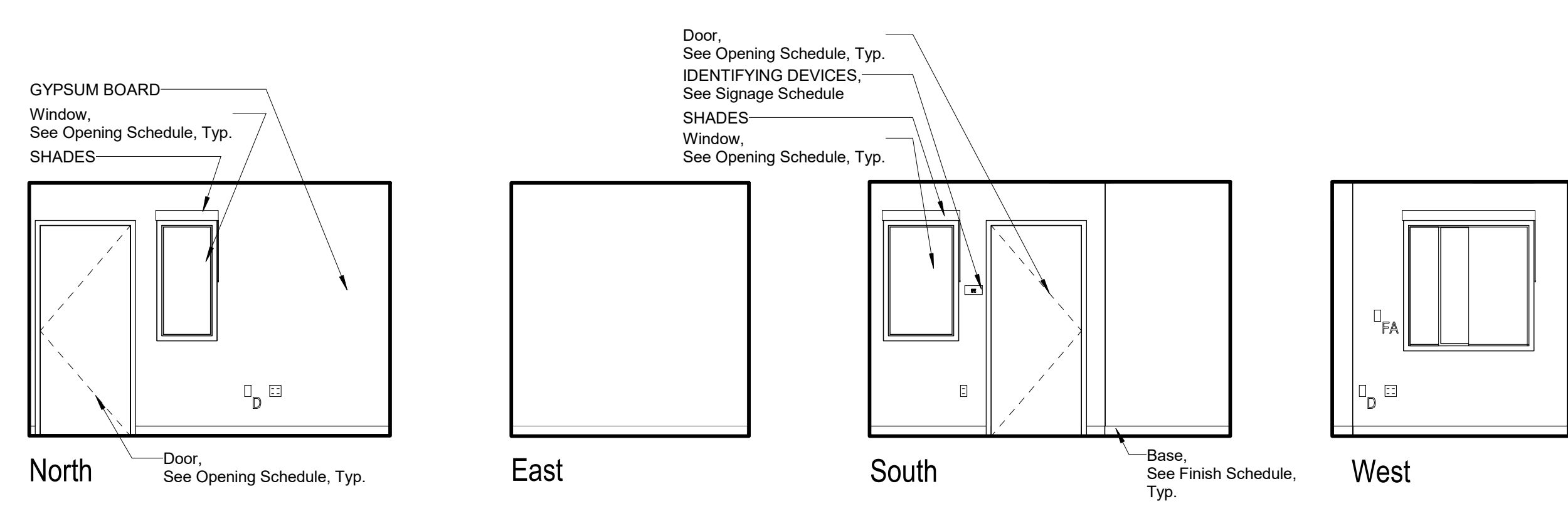
102 Exam Room



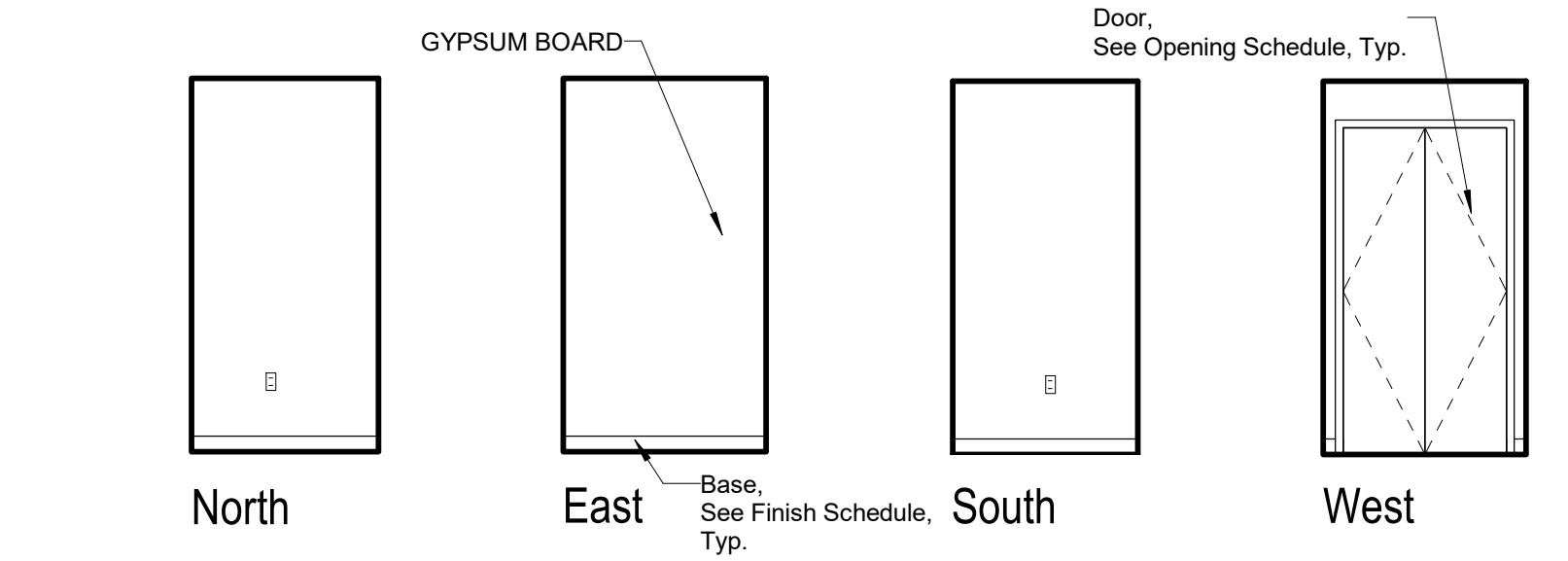
103 Restroom



104 Office



105 Office



106 Closet

DSA File No.: 24-C1

DSA Application No.: 02-118108

Agency Approval

- SYMBOLS**
- ▲ Cabinet Group No. Refer to Modular Casework Schedule and Lab Casework Schedule.
 - FIRE PROTECTION SPECIALTIES, Fire Extinguisher Cabinet, Top of Cabinet @ +5'-0". Unless Noted Otherwise, Provide Fire Rated Cabinet at Rated Walls. See detail A111 X/A601
 - ELECTRICAL, Duplex Outlet
 - ELECTRICAL, Fourplex Outlet
 - ELECTRICAL, Light Switch
 - ELECTRICAL, Data Outlet
 - ELECTRICAL, Fire Alarm Device

- ABBREVIATIONS**
- GL Glass
 - KS Knee Space
 - OH Opposite Hand
 - Typ. Typical
 - Sim. Similar
 - Dia. Diameter
 - UNO Unless Noted Otherwise

- NOTES**
- All Details, Materials and Finishes shall be considered typical for all similar conditions Unless Noted Otherwise.
 - Refer to Plumbing, Mechanical, Telecommunications, and Electrical for all wall mounted devices and coordinate location and heights with Architectural (i.e. casework, equipment, etc.)
 - Locate and mount TOILET ACCESSORIES and PLUMBING per detail Unless Noted Otherwise.
 - Provide backing at all TOILET ACCESSORIES, and IDENTIFYING DEVICES per detail Unless Noted Otherwise.
 - Provide Backing for TOILET ACCESSORIES, Grab Bars per detail Unless Noted Otherwise.
 - Locate and mount IDENTIFYING DEVICES per detail Unless Noted Otherwise.
 - Provide backing at all MODULAR CASEWORK per detail Unless Noted Otherwise.
 - Attach all MODULAR CASEWORK per detail Unless Noted Otherwise.
 - SHADES, Manual Shade System, see detail
 - WALL AND CORNER GUARDS, Impact Resistant Wall Covering and Wall Guard
 - Refer to A/A801 for Interior Design Drawings and Interior Color Schedule.
 - Refer to A111 X/A101 for ELECTRICAL, Outlet opening detail and A11 X/A101 for rated condition
 - Contractor to provide backing at all OWNER PROVIDED, CONTRACTOR INSTALLED Toilet accessories. See detail

G18 Interior Elevation legend
No Scale

Student Health Center
Merced College
Merced, CA 95348

BUILDING A
INTERIOR ELEVATIONS

ARCHITECTURE
PLANNING
INTERIORS
architects www.dardenarchitects.com
6790 N. West Ave. • Fresno, CA 93711 • T. 559.448.8051

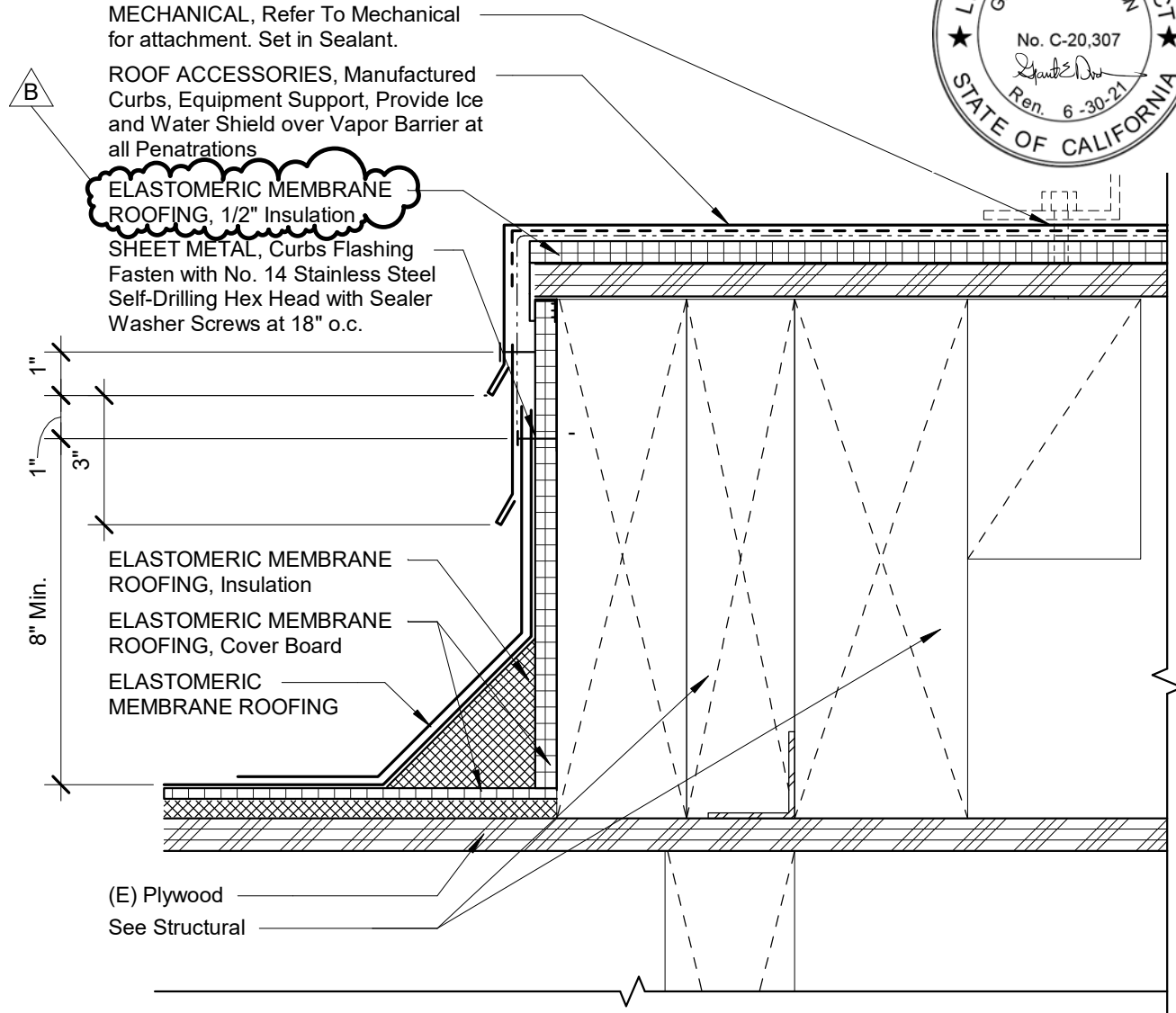
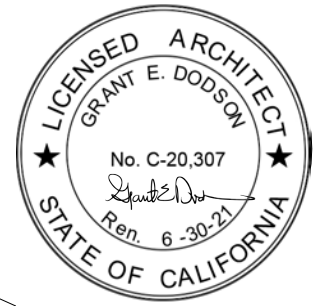
No.	Revision/Submission	Date
1	Addenda 1	07/1/2020

Revision	
Designed By:	Copyright © 2020 Darden Architects
Drawn By:	LR
Checked By:	
Reviewed By:	

A/A601

6/26/2020 11:30:39 AM
D:\0-REVIT FILES\1954-MC-HealthCenter_Building_BIDDING_V18_tasharAAPW.rvt

A1 Interior Elevations



N14	ROOF ACCESORIES, Manufactured Curbs, Equipment Platform
3" = 1'-0"	

**ROOF ACCESORIES, Manufactured Curbs,
Equipment Platform**

DSA File No: 24-C1
DSA Appl No: 02-118108

6/16/2020 10:01:10 AM D:\0-REVIT FILES\1954-MC-HealthCenter_Building_V18_tashar\A4APW.rvt



ARCHITECTURE · PLANNING · INTERIORS
 Robert L. Petithomme AIA · Grant E. Dodson AIA · DeDe Darnell ASID
 Antonio J. Avila AIA · Michael K. Fennacy AIA · Michael J. Nelson
 Sean P. Mendoza AIA · Leslie A. Rau HIDA · Martin A. Ilic
 Gerardo Padron · Mathew R. Heiss AIA · Andrew A. Corral AIA
 6790 N. West Avenue · Fresno, California 93711 · 559 448-8051 · Fax 559 446-1765

Project No:	1954
Date:	07/1/2020
Scale:	3" = 1'-0"
Copyright 2020 Darden Architects	

Student Health Center
 Merced College
 Merced, CA 95348

AD1-AX02

SECTION 102813 – TOILET ACCESSORIES

PART 1 - GENERAL

1.1 SUMMARY

- A. This Section includes the following:
 - 1. Furnish all material, labor, equipment and services necessary to furnish Toilet Accessories and other related items necessary to complete the Project as indicated by the Contract Documents unless specifically excluded.

- B. Related Sections: The following Sections contain requirements that relate to this Section:
 - 1. ALL DIVISION 00 SPECIFICATION SECTIONS.
 - 2. ALL DIVISION 01 SPECIFICATION SECTIONS.
 - 3. 06 10 00 ROUGH CARPENTRY
 - 4. 08 80 00 GLASS
 - 5. 09 24 00 CEMENT PLASTER
 - 6. 09 29 00 GYPSUM BOARD
 - 7. 09 30 13 TILE
 - 8. ALL SPECIFICATION SECTIONS IN THE FACILITY SERVICES SUBGROUP.

1.2 SUBMITTALS

- A. Submit in accordance with Specification Section - SUBMITTAL PROCEDURES:
 - 1. Product Data.
 - 2. Shop Drawings.
 - a. Submit shop drawings from manufacturer detailing equipment assemblies and indicating dimensions, weights, loading, required clearances, method of field assembly, components, and location (including ADA Required dimensions for mounting locations), and size of each field connection.

1.3 QUALITY ASSURANCE

- A. Regulatory Requirements:
 - 1. In accordance with Specification Section - REGULATORY REQUIREMENTS, and the following:
 - a. ADA American's with Disabilities Act 1990.
 - b. ANSI American National Standards Institute Specifications ANSI A117.1 "Accessible and Usable Buildings and Facilities".
 - c. CARB Materials and equipment used for this Project shall comply with the current applicable regulations of the California Air Resources Board (CARB) and the Environmental Protection Agency (EPA), in the area where the project is located.
 - d. CBC California Building Code (California State Building Standards Code - Title 24) and the latest edition of DSA's California State Accessibility Standards Interpretive Manual (CalACS).

1.4 WARRANTY

- A. Contractor's General Warranty: In accordance with Specification Section - WARRANTIES.
- B. .Manufacturer's Warranty: In accordance with manufacturer's written standard warranty:
 - 1. Warranty Period: One (1) Year.
- C. Installer's Warranty: In accordance with the terms of the Specification Section - WARRANTIES:
 - 1. Warranty Period: One (1) Year.

PART 2 - PRODUCTS - REFER TO SCHEDULE

PART 3 - EXECUTION

3.1 INSTALLATION

- A. All Toilet Room Accessories shall be furnished and installed by the Contractor, in accordance with manufacturer's written recommendations, in accordance with accessible mounting height.
- B. Install in accordance with CBC ADA Accessibility Chapters and Sections, and ANSI A 117.1.

3.2 SCHEDULES

- A. All devices listed herein shall be installed where shown, complete, and ready for use in full compliance with all applicable codes and standards. The manufacturers listed are acceptable as approved suppliers to the Owner (**MERCED COLLEGE**). Substitution of manufacturers other than those listed, must be approved by the Owner.
 - 1. Grab Bars:
 - a. 1-1/2" diameter, 18 gage seamless, stainless safety-grip finish, exposed mounting, vandal resistant screws, in configuration as required.
 - 1) Acceptable manufacturers:
 - a) BOBRICK B-6806-99.
 - b) BRADLEY 812-2.
 - c) AMERICAN SPECIALTIES INC. 3800.
 - 2. Mirrors (Type 1):
 - a. One piece channel frame, galvanized steel back, wall mounted for accessibility as detailed on the drawings, 1/4" tempered glass, size as shown.
 - 1) Acceptable manufacturers:
 - a) BOBRICK B-165 Series.
 - b) BRADLEY 781.
 - c) AMERICAN SPECIALTIES INC. 0620

END OF SECTION