

# MERCED COMMUNITY COLLEGE DISTRICT

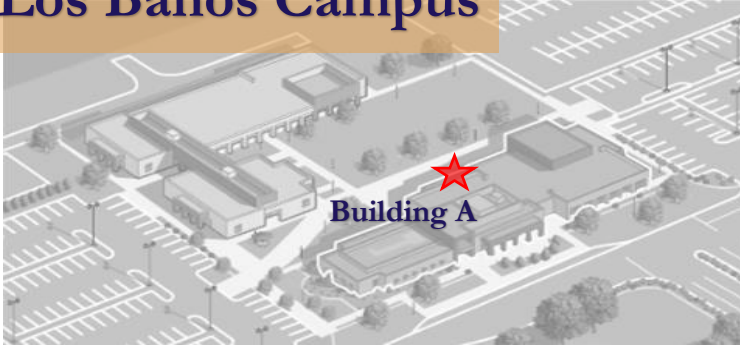
## HEALTH & WELLNESS STATIONS



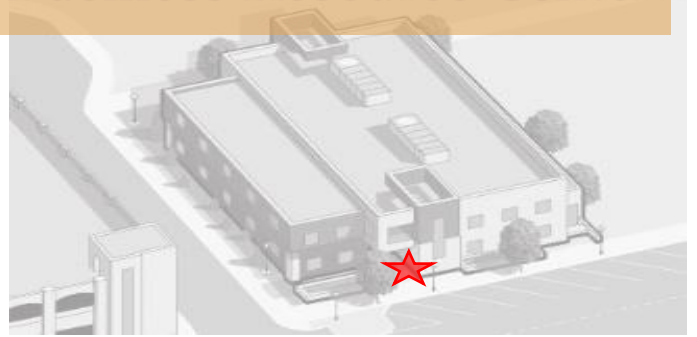
### Location of Health & Wellness Stations

Merced and BRC stations will be stocked with hand sanitizer, face masks, and COVID-19 self-checker reference. During peak hours a Student Worker will be present to assist students and staff. In Los Banos, classes will be stocked with hand sanitizer, face masks, and COVID-19 self-checker reference, with the Student Health Nurse on campus as an additional resource.

### Los Banos Campus



### Business Resource Center



### Merced Campus

