

## Merced College

### Instructional Program Review/Institutional Effectiveness Metrics Glossary of Terms

#### **Abbreviations**

- MC or MCCD—Merced Campus, including off-site locations other than Los Banos
- LB—Los Banos Campus
- Area 1—Science, Math, and Engineering
- Area 2—English and Humanities
- Area 3—Career Technical Education
- Area 4—Allied Health, Business, and Public Safety
- Area 5—Fine & Performing Arts and Social Sciences
- Area 6—Non-credit and off-campus centers, including Delhi, Dos Palos, Livingston, and Mariposa
- Area 7—Los Banos Campus
- Area LRC/SS—Learning Resources Center/Student Services (including LRNR, STGV and GUID courses)
- FTEF—Full-time Equivalent Faculty, a measure of teaching load in a given term
  - FTES—Full-time Equivalent Student, formerly called “Average Daily Attendance.” It’s a measure of workload based on enrollment and attendance. FTES is a calculation used by the state to determine funding levels per student as a measure of enrollment. One FTES represents 525 class (contact) hours of student instruction/activity in credit and noncredit courses. This is based on a theoretical student being enrolled in courses for 3 hours a day, 5 days a week for an academic year of 35 weeks (1 FTES =  $3 \times 5 \times 35 = 525$ ).
- WSCH—Weekly Student Contact Hours, a measure of time spent on instruction per week times the number of students in the class, and is a measure of revenue. A class with 30 students meeting 3 hours a week has 90 WSCH. The more students enrolled in a class, the higher the WSCH.
- DE—Distance Education (includes hybrid and 100% distance education)
- Non-DE—Non-Distance Education
- LC—Learning Community
- OL—Overload
- SI—Supplemental Instruction
- Sec—Course Section
- ST—Short-Term

## Terms

- **Enrollment**—number of students in at least one course who receives any grade (A, B, C, P, D, F, NP, W, FW, MW, I). Enrollment may be duplicated (each student is counted once for each course enrolled in), or unduplicated (each student is counted only once regardless of the number of courses enrolled in)
- **Completion Rate or Course Completion Rate (CCR)**—percent of students enrolled who completed the course (retained until the end of the semester), defined as a receiving a letter grade A, B, C, P, D, F, NP, I. *Formerly Retention.*

Numerator: A, B, C, P, D, F, NP, I

Denominator: A, B, C, P, D, F, NP, W, FW, MW, RD, I

- **Success Rate or Course Success Rate (CSR)**—percent of students enrolled who receive a letter grade A, B, C, P.

Numerator: A, B, C, P

Denominator: A, B, C, P, D, F, NP, W, FW, MW, RD, I

- **Persistence (term-to-term)**: Those students who receive any grade persists (enrolls in) the following term (i.e. fall to spring). Students who drop are not considered.

*Initial term* : Student enrolls in at least one course and receives any grade (A, B, C, P, D, F, NP, W, FW, MW, RD, I) Following term:

Student enrolls in at least one course and receives any grade (A, B, C, P, D, F, NP, W, FW, MW, RD, I) -----*Persistence rate* (term-to-term):

The percent of students who persist from one semester to the next semester.

NOTE: This definition can apply to the course or program-level. Persistence is different from progress.

- **Progress**: Measured by those students who move from basic skills (credit or non-credit) to non-basic skills/collegiate-level courses (from ENGL-85 to ENGL-01A or MATH-90 to MATH-02).
- **Productivity**: Measured by WSCH divided by FTEF. This calculation can be thought of as a measure of productivity (revenue divided by cost). The higher the number, the more cost effective a class can be considered to be.

**NOTE: The data is as of Census.**

Table 2A- CCR						
CCR	MCCD	MC	LB	DE	Non-DE	District Avg
2012-13	89.92%	89.92%	-	-	89.92%	83.80%
2013-14	83.76%	83.76%	-	-	83.76%	84.55%
2014-15	89.61%	89.61%	-	-	89.61%	84.32%
2015-16	85.62%	85.62%	-	-	85.62%	85.66%
2016-17	83.01%	83.01%	-	-	83.01%	85.41%

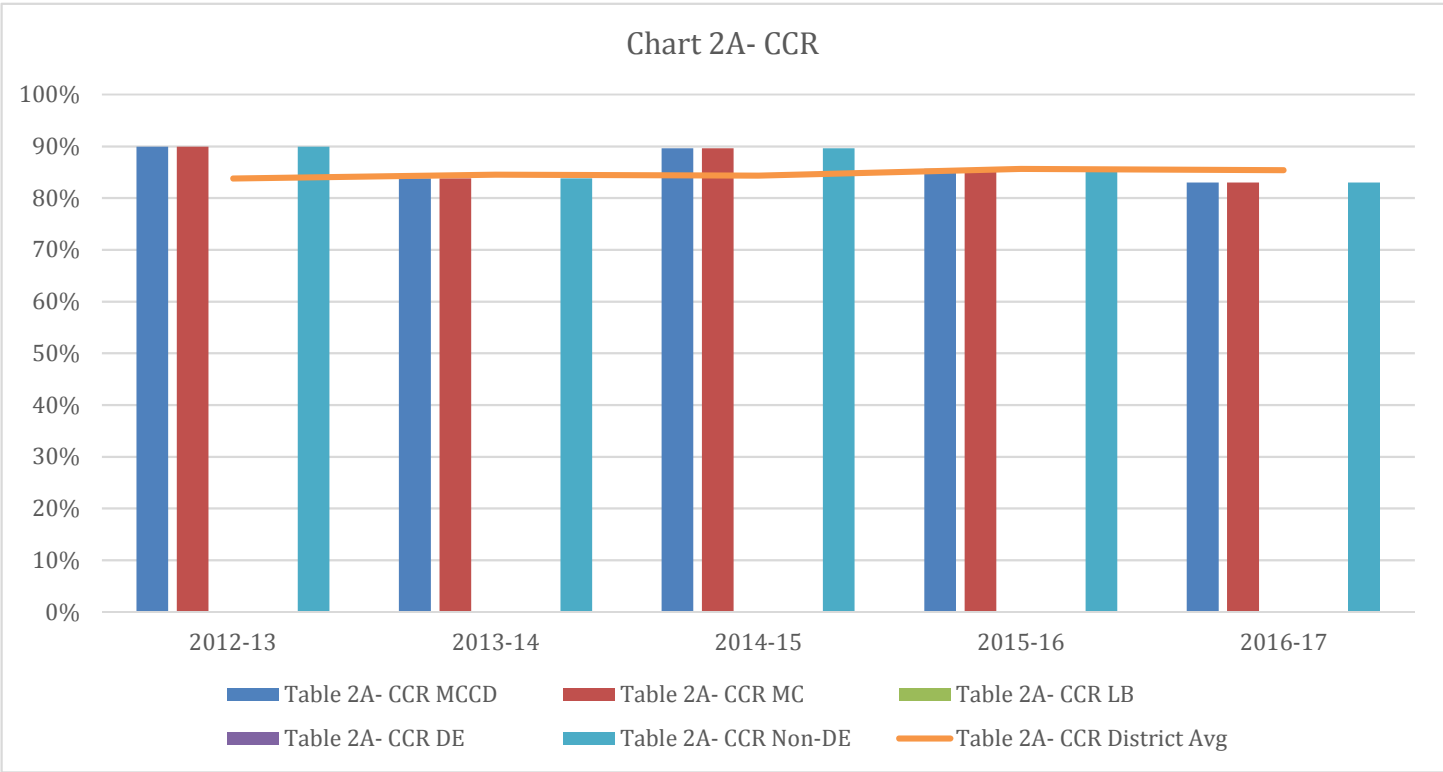
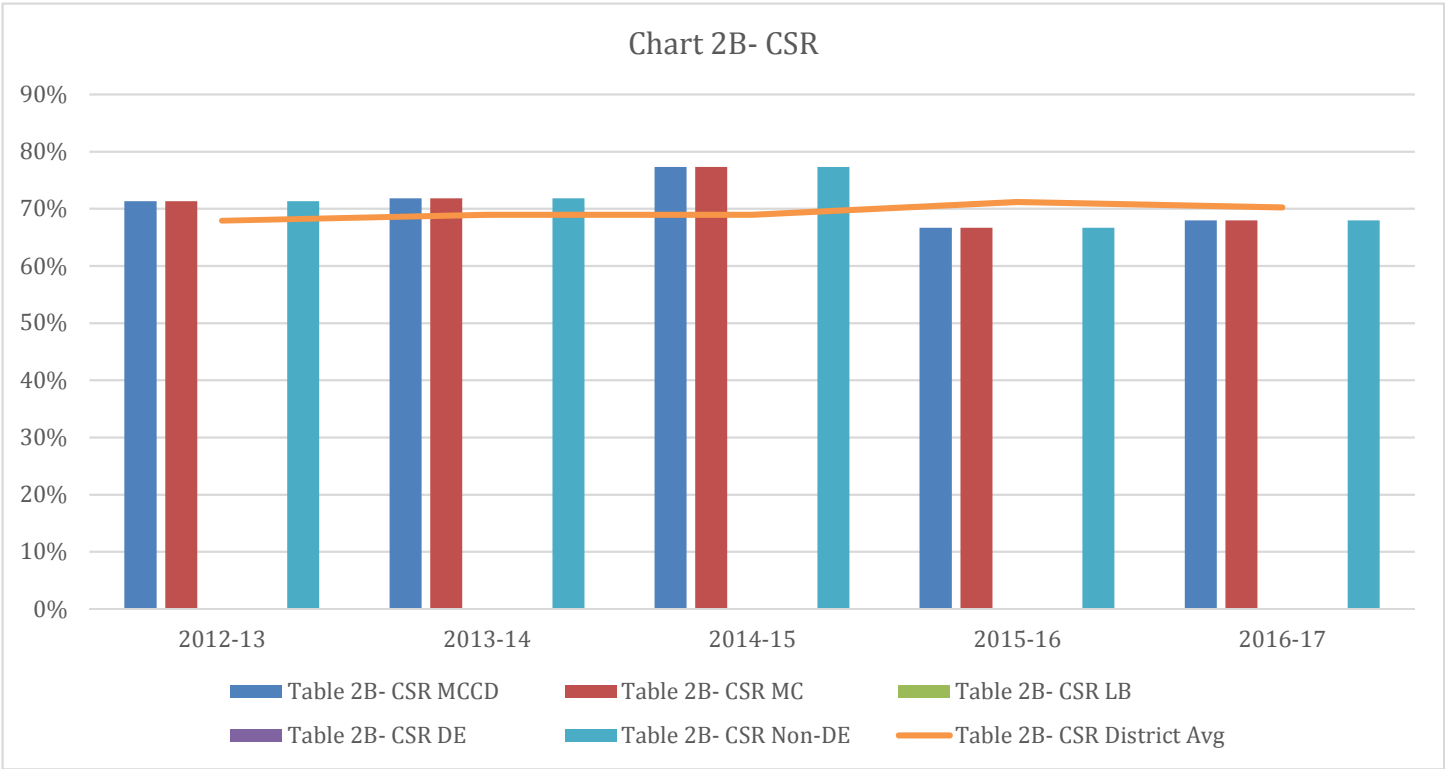


Table 2B- CSR						
CSR	MCCD	MC	LB	DE	Non-DE	District Avg
2012-13	71.32%	71.32%	-	-	71.32%	67.92%
2013-14	71.79%	71.79%	-	-	71.79%	68.98%
2014-15	77.27%	77.27%	-	-	77.27%	68.98%
2015-16	66.67%	66.67%	-	-	66.67%	71.18%
2016-17	67.97%	67.97%	-	-	67.97%	70.24%



<b>Table 2C- Awards</b>					
Award	2012-13	2013-14	2014-15	2015-16	2016-17
AA	4	5	1	2	2
AS	2	0	1	4	3
CT	-	-	-	-	-

<u>Defintions</u>
<i>Completion Rate or Course Completion Rate (CCR) —percent of students enrolled who completed the course (retained until the end of the semester), defined as a receiving a letter grade A, B, C, P, D, F, NP, I. Formerly Retention.</i>
<i>Success Rate or Course Success Rate (CSR) —percent of students enrolled who receive a letter grade A, B, C, P.</i>

Table 3A- Productivity					
Productivity	MCCD	MC	LB	DE	Non-DE
2012-13	337.20	337.20	-	-	337.20
2013-14	323.57	323.57	-	-	323.57
2014-15	415.56	415.56	-	-	415.56
2015-16	408.75	408.75	-	-	408.75
2016-17	374.50	374.50	-	-	374.50

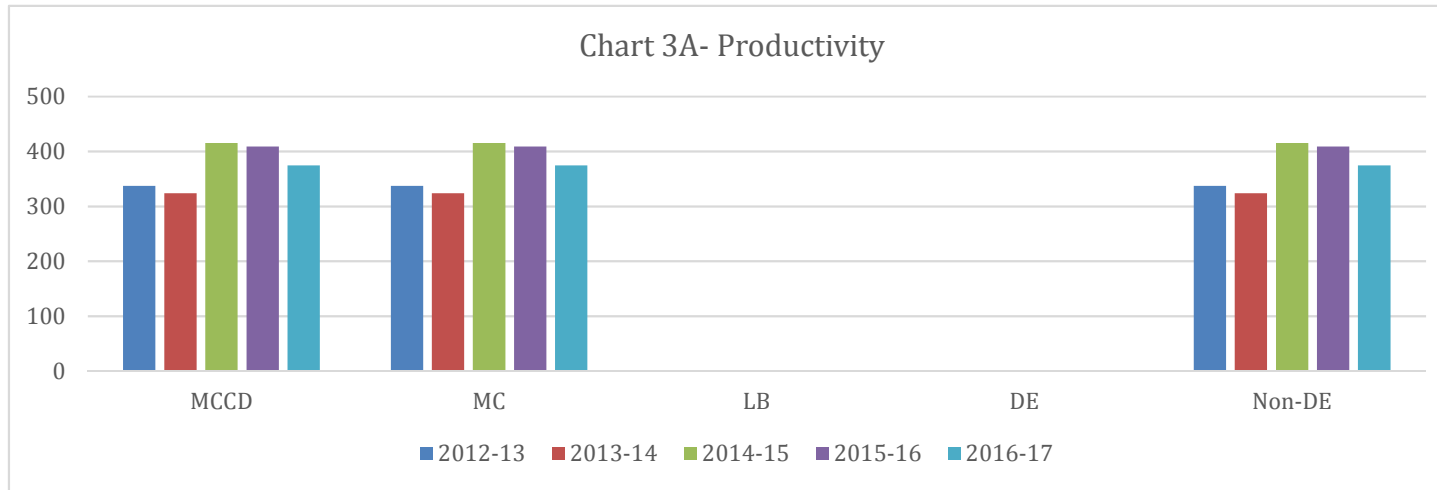


Table 3B- WSCH					
WSCH	MCCD	MC	LB	DE	Non-DE
2012-13	562.00	562.00	-	-	562.00
2013-14	453.00	453.00	-	-	453.00
2014-15	748.00	748.00	-	-	748.00
2015-16	763.00	763.00	-	-	763.00
2016-17	749.00	749.00	-	-	749.00

Table 3C- FTEF					
FTEF	MCCD	MC	LB	DE	Non-DE
2012-13	1.67	1.67	-	-	1.67
2013-14	1.40	1.40	-	-	1.40
2014-15	1.80	1.80	-	-	1.80
2015-16	1.87	1.87	-	-	1.87
2016-17	2.00	2.00	-	-	2.00

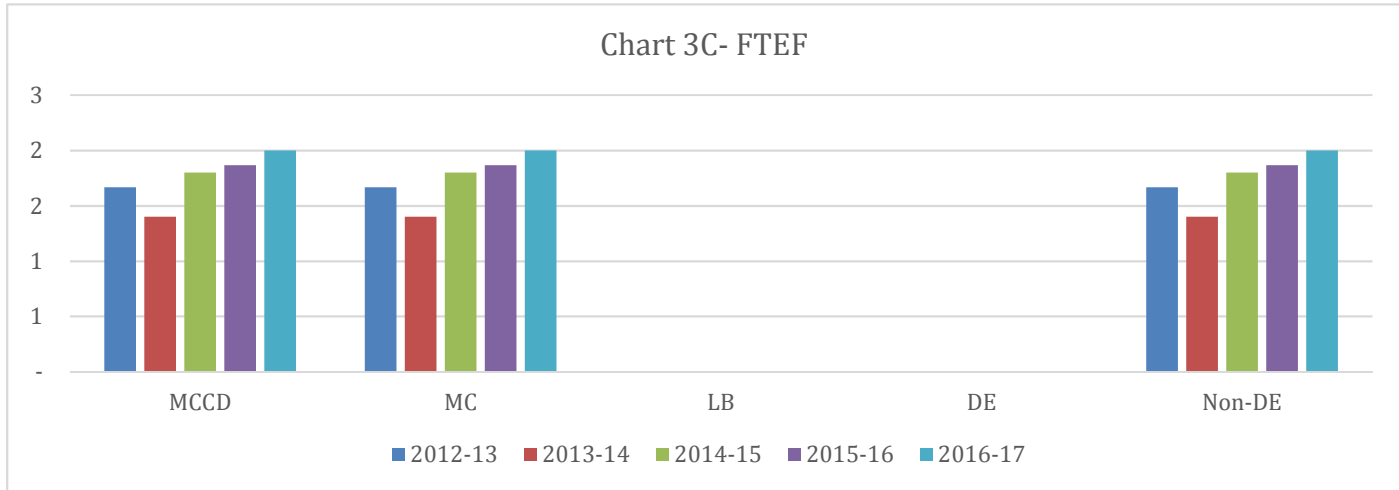
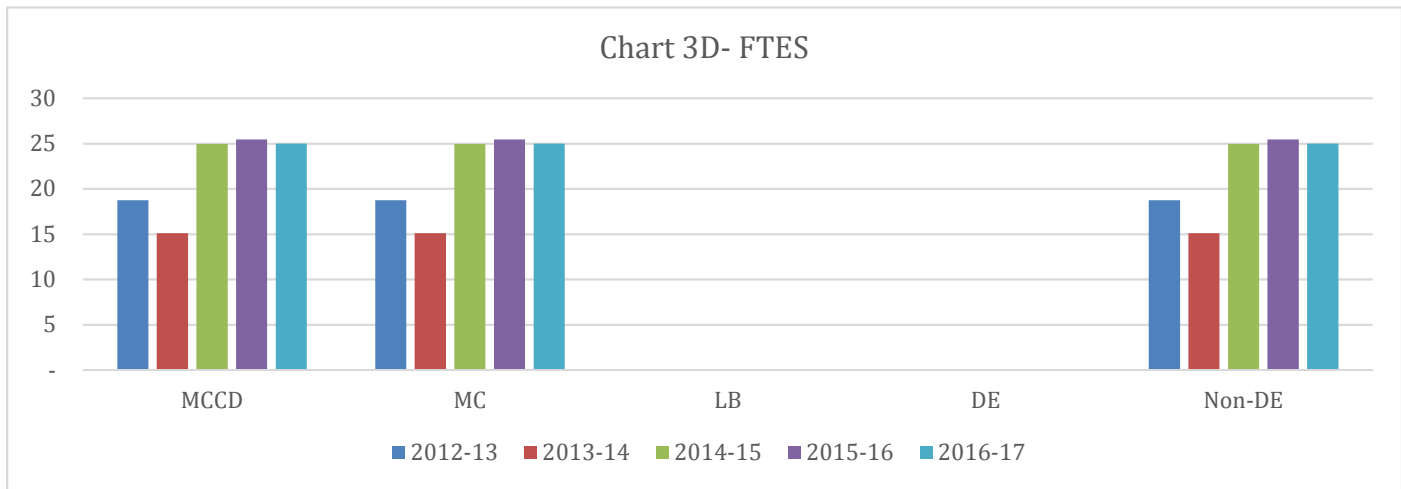


Table 3D- FTES					
FTES	MCCD	MC	LB	DE	Non-DE
2012-13	18.73	18.73	-	-	18.73
2013-14	15.10	15.10	-	-	15.10
2014-15	24.93	24.93	-	-	24.93
2015-16	25.43	25.43	-	-	25.43
2016-17	24.97	24.97	-	-	24.97



Defintions

Productivity WSCH divided by FTEF  
 WSCH Weekly Student Contact Hours  
 FTEF Full-Time Equivalent Faculty  
 FTES Full-Time Equivalent Student



Table 4A- % Filled						
% Filled	MCCD	MC	LB	DE	Non-DE	District Avg
2012-13	57.43%	57.43%	-	-	57.43%	71.36%
2013-14	58.24%	58.24%	-	-	58.24%	71.47%
2014-15	71.65%	71.65%	-	-	71.65%	68.52%
2015-16	51.76%	51.76%	-	-	51.76%	67.88%
2016-17	63.37%	63.37%	-	-	63.37%	63.78%

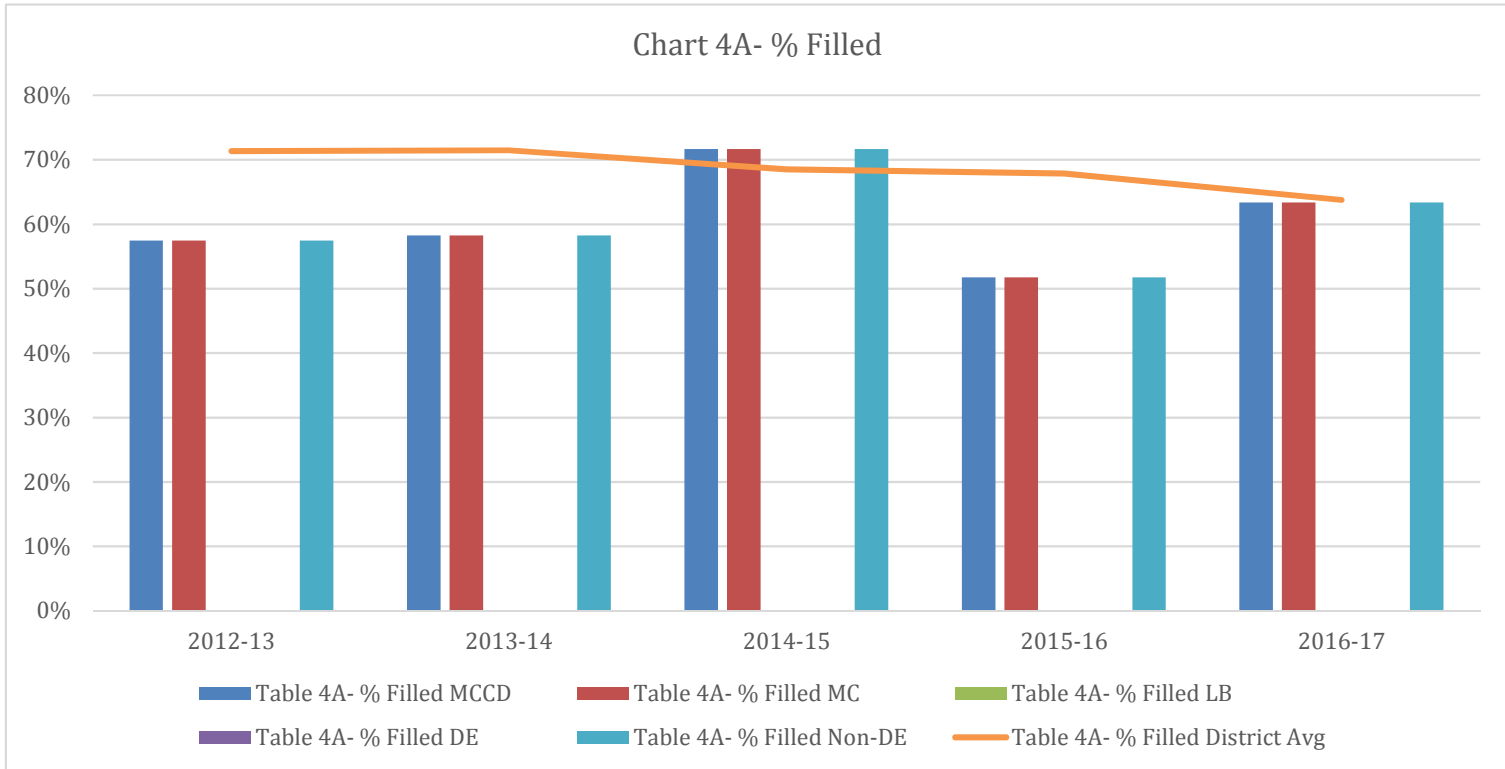
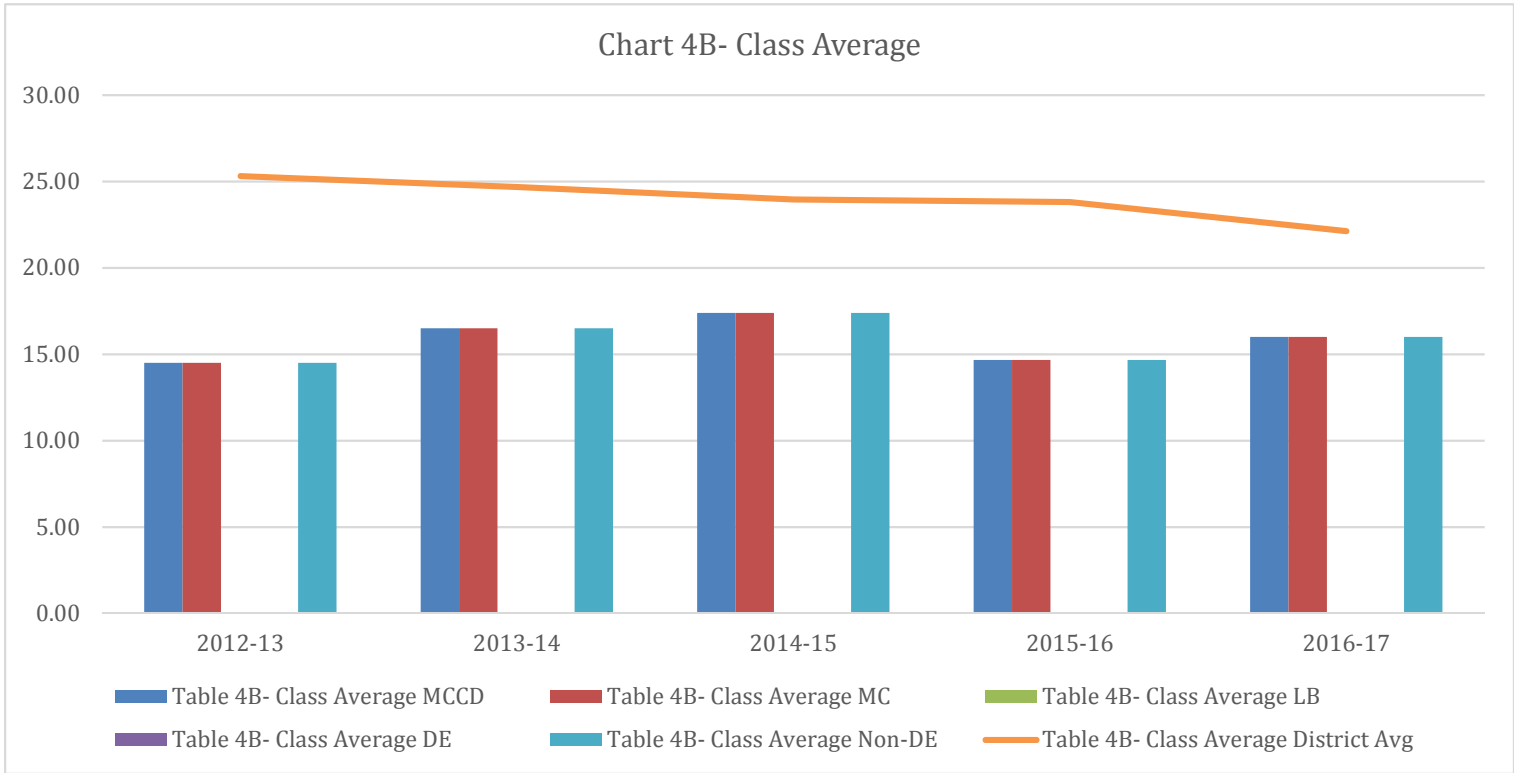


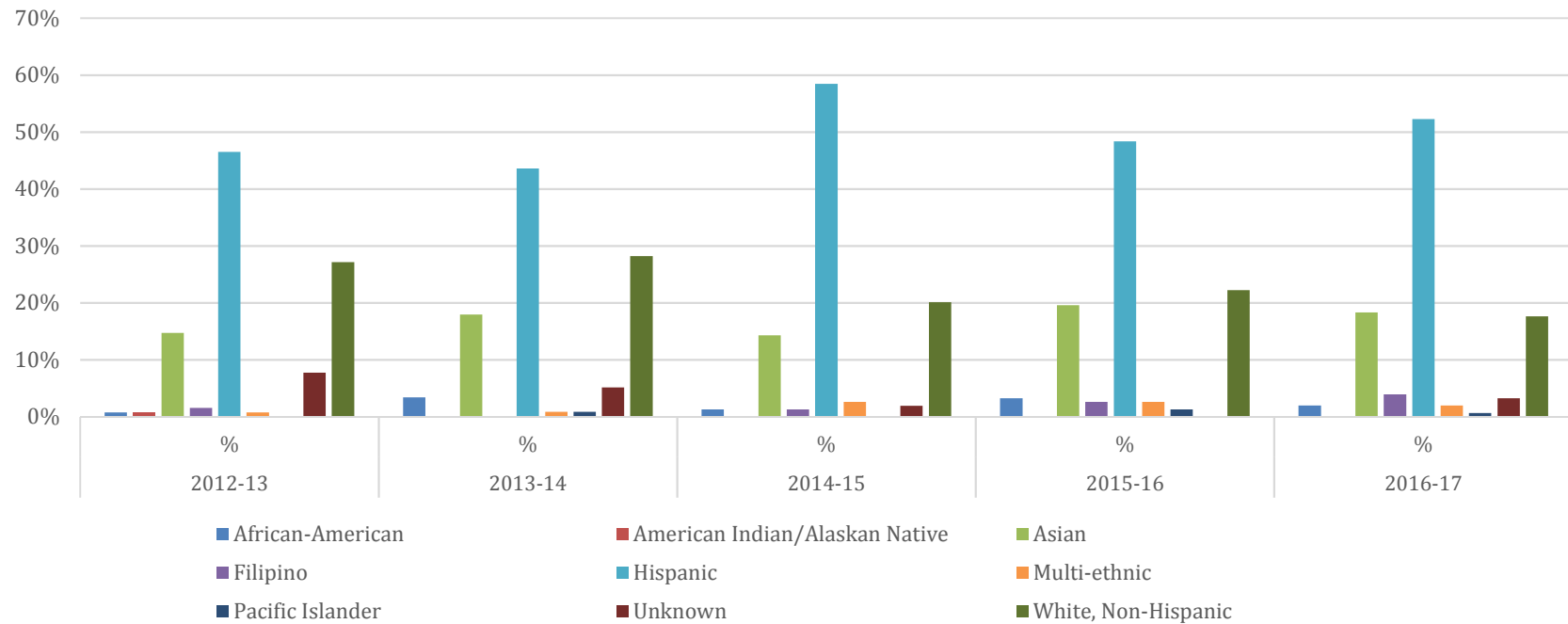
Table 4B- Class Average						
Average	MCCD	MC	LB	DE	Non-DE	District Avg
2012-13	14.50	14.50	-	-	14.50	25.32
2013-14	16.50	16.50	-	-	16.50	24.69
2014-15	17.38	17.38	-	-	17.38	23.97
2015-16	14.67	14.67	-	-	14.67	23.81
2016-17	16.00	16.00	-	-	16.00	22.13



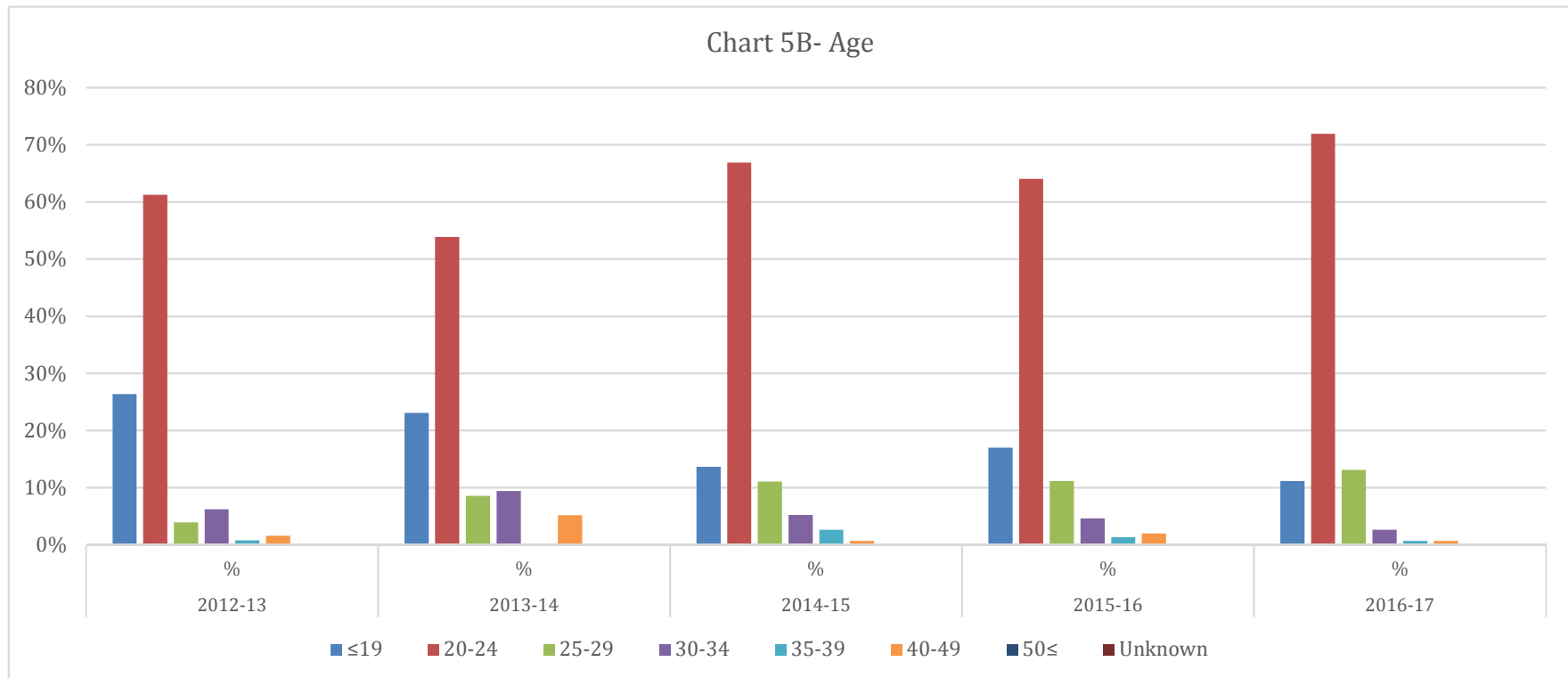
<b>Table 4C- Number of Sections</b>					
<b># Sec</b>	<b>MCCD</b>	<b>MC</b>	<b>LB</b>	<b>DE</b>	<b>Non-DE</b>
2012-13	8	8	-	-	8
2013-14	6	6	-	-	6
2014-15	8	8	-	-	8
2015-16	9	9	-	-	9
2016-17	8	8	-	-	8

Race/Ethnicity	2012-13		2013-14		2014-15		2015-16		2016-17		District Avg
	N	%	N	%	N	%	N	%	N	%	%
African-American	1	0.78%	4	3.42%	2	1.30%	5	3.27%	3	1.96%	3.70%
American Indian/Alaskan Native	1	0.78%	0	0.00%	0	0.00%	0	0.00%	0	0.00%	0.49%
Asian	19	14.73%	21	17.95%	22	14.29%	30	19.61%	28	18.30%	9.08%
Filipino	2	1.55%	0	0.00%	2	1.30%	4	2.61%	6	3.92%	0.86%
Hispanic	60	46.51%	51	43.59%	90	58.44%	74	48.37%	80	52.29%	55.27%
Multi-ethnic	1	0.78%	1	0.85%	4	2.60%	4	2.61%	3	1.96%	2.57%
Pacific Islander	0	0.00%	1	0.85%	0	0.00%	2	1.31%	1	0.65%	0.37%
Unknown	10	7.75%	6	5.13%	3	1.95%	0	0.00%	5	3.27%	2.82%
White, Non-Hispanic	35	27.13%	33	28.21%	31	20.13%	34	22.22%	27	17.65%	24.84%

Chart 5A- Race/Ethnicity



Age	2012-13		2013-14		2014-15		2015-16		2016-17		District Avg
	N	%	N	%	N	%	N	%	N	%	%
≤19	34	26.36%	27	23.08%	21	13.64%	26	16.99%	17	11.11%	28.70%
20-24	79	61.24%	63	53.85%	103	66.88%	98	64.05%	110	71.90%	34.80%
25-29	5	3.88%	10	8.55%	17	11.04%	17	11.11%	20	13.07%	12.35%
30-34	8	6.20%	11	9.40%	8	5.19%	7	4.58%	4	2.61%	6.81%
35-39	1	0.78%	0	0.00%	4	2.60%	2	1.31%	1	0.65%	4.41%
40-49	2	1.55%	6	5.13%	1	0.65%	3	1.96%	1	0.65%	5.72%
50≤	0	0.00%	0	0.00%	0	0.00%	0	0.00%	0	0.00%	6.82%
Unknown	0	0.00%	0	0.00%	0	0.00%	0	0.00%	0	0.00%	0.39%



Gender	2012-13		2013-14		2014-15		2015-16		2016-17		District Avg
	N	%	N	%	N	%	N	%	N	%	%
Female	10	7.75%	14	11.97%	26	16.88%	27	17.65%	27	17.65%	57.27%
Male	119	92.25%	103	88.03%	128	83.12%	126	82.35%	126	82.35%	41.55%
Unknown	0	0.00%	0	0.00%	0	0.00%	0	0.00%	0	0.00%	1.18%
<b>TOTAL</b>	<b>129</b>	<b>100.00%</b>	<b>117</b>	<b>100.00%</b>	<b>154</b>	<b>100.00%</b>	<b>153</b>	<b>100.00%</b>	<b>153</b>	<b>100.00%</b>	<b>100.00%</b>

