

LEARNING RESOURCE CENTER MERCED COLLEGE



Merced Community College
Monthly Project Report
Learning Resource Center



Project Team

Architect/Engineer

Lionakis Beaumont Design Group
Dave Younger– Principal
Jonathan McMurtry– Proj Mgr
Turley and Associates
Ken Rubitsky & Associates
Smith, Fause & McDonald, Inc.
David Bigler Associates

Construction Manager

Parsons Brinckerhoff Constr Svcs
Bruce Rich– Project Executive
Alex Belanger– Project Mgr
Ken Schultz– Proj Super
Aida Ramos - Project Admin

Inspector Of Record

United Inspection Services
John Hill

Facility Delivery Team

Terry Ruscoe– Director Facilities
Rick Souhrada– Director Maint.

COLLEGE OFFICIALS

Board of Trustees

Eugene J. Vierra-President
Robert Haden-Vice President
Jinet Troost-Clerk
Les McCabe-Member
Eva de Long-Member
Lewis Braxton-Member
Jim Glidden-Member

Executive Administration

Benjamin Duran– President
Larry Johnson- VP Admin
John Spevak- VP Instruction
Ann Newins– VP Student Svcs
Mike Cuchna—Dean
Harry Gossett– Dean
Sarah Green– Dean
Robert Lenz– Dean
Karyn Wiens– Dean-Acting

Project Overview

The new Learning Resource Center will provide expanded learning opportunities for the students and staff of Merced College and the Merced Community. The 67,000 square foot facility will have a state of the art data network system that will allow visitors access to a wide range of electronic media as well as the resources of the World Wide Web through a high capacity Internet connection. The facility will provide numerous study areas as well as meeting rooms and group study rooms. The book stack area will provide space for 50,000 volumes. The facility is scheduled for occupancy at the start of the Winter 2007 Semester.

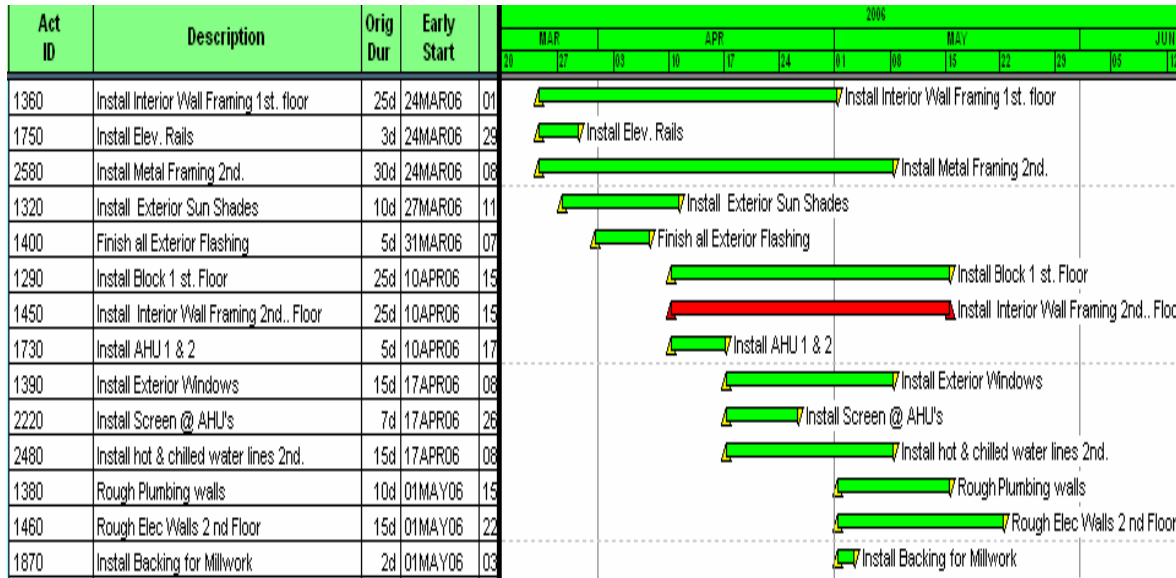


PROJECT STATUS REPORT

Original Contracts	\$	13,720,213
Approved Changes	\$	(40,666)
Pending Changes	\$	32,651
Current Contracts	\$	13,712,198
% Changes		-0.058%

Monthly Report Number 6
March 2006

Work Scheduled for the next Six Weeks



Exterior Metal Studs



This Month Activities

- Complete installation of roof insulation
- Complete Exterior Metal Studs
- Start Interior Metal Studs
- Erect Scaffolding
- Continue Ductwork installation
- Continue Electrical installation

Next Month Planned Activities

- Install exterior sheeting under masonry
- Install exterior sheeting under stucco
- Begin Stucco exterior
- Energize Main Transformer
- Begin Masonry work



Progress slightly ahead of schedule

