

ALLIED HEALTH CENTER-PHASE 1 MERCED COLLEGE



Merced Community College
Monthly Project Report
Allied Health Center—Phase 1



Project Team

Architect/Engineer

Lionakis Beaumont Design Group
Dave Younger, Principal
Toby Insinna, Project Mngr
Turley and Associates
Ken Rubitsky & Associates
Smith, Fause & McDonald, Inc.
David Bigler Associates

Construction Manager

PB Americas, Inc
Bruce Rich, Project Executive
Tony Valdez, Project Manager
Sara Alvarado, Project Engineer

Inspector Of Record

United Inspection Services,
Jim Wolmack
Carl Horner

Facility Delivery Team

Joe Bisinger, Purchasing/Facilities
Lead
Rick Souhrada, Facilities
Construction Director
Sheila Flores, Facilities Planner

COLLEGE OFFICIALS

Board of Trustees

Jinet Troost, President
Lewis S. Braxton, Vice-President
Eva de Long, Clerk
Jim Glidden, Member
Les McCabe, Member
Eugene J. Vierra, Member

Executive Administration

Benjamin Duran, President
Larry Johnson, VP Admin
John Spevak, VP Instruction
Anne Newins, VP Student Svcs
Mike Cuchna, Assoc. VP
Sarah Greene, Dean
Karyn Wiens, Dean
Bobby Anderson, Dean
Bob Taylor, Dean
Betsy Donovan, Interim Dean

Project Overview

The Allied Health Center will provide expanded learning opportunities for the students and staff of Merced College and the Merced Community. The project consists of 2 buildings totaling 28,000 SF. The buildings include x-ray suites, offices, meeting rooms, study rooms and classrooms. Project also consists of extending the gas line, hydronic services and water services to the site. The Project is scheduled to be completed Spring of 2009.

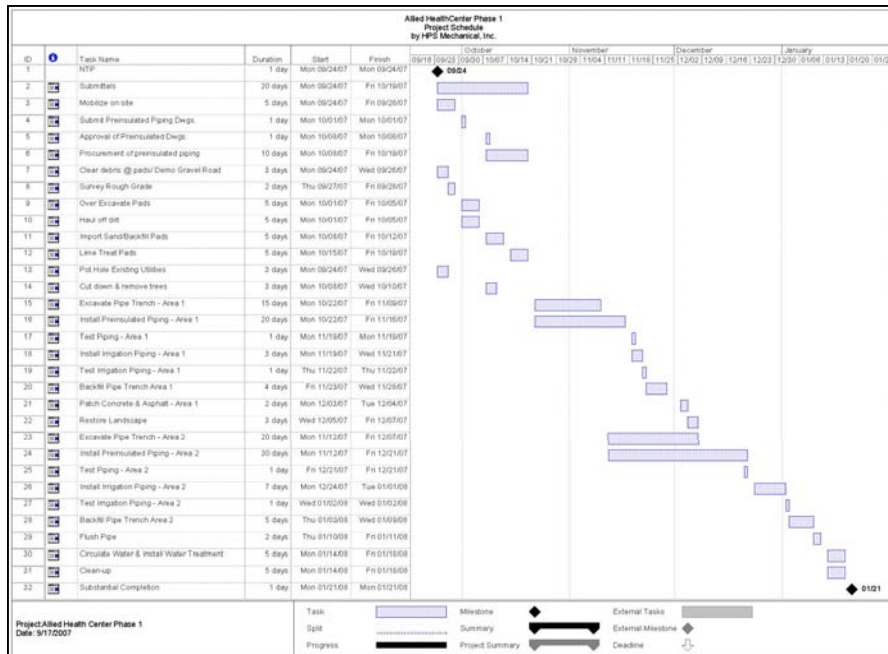


PROJECT STATUS REPORT

Original Contracts	\$1,021,518.00
Approved Changes	\$0.00
Pending Changes	\$75,431.00
Current Contracts	\$1,096,949.00
% Changes	7.384%

Monthly Report Number 2
November 2007

Work Schedule



Building Pad at the Allied Health Center



This Month Activities (November 2007)

- Excavate Trench for Hydronic Piping
- Place bedding sand and lay pipe in trench
- Start welding pipe inside the trench
- Relocate unforeseen water lines



Next Month Activities (December 2007)

- Continue Excavating Trench
- Continue Placing Sand in the Trench
- Continue Placing and Welding pipe in Trench
- Start Placing Gas Line Inside Trench
- Start Placing Irrigation Water Main Inside Trench
- Start Backfilling Trench

Progress on Schedule

